

# For Lease | Office/Retail Space

**NAI 1st Valley**



**4660 Sonoma Ranch Blvd | Las Cruces, NM 88011**

## Listing Overview

<b>Lease Rate</b>	\$30.00 SF/yr (NNN)
<b>Building Size</b>	± 9,400 SF
<b>Available Space</b>	± 1,548 SF

- Recently built retail/office center
- Located in the fastest growing residential and commercial area in Las Cruces
- Built out for salon, but could be converted for other uses
- End cap space
- Corner lot
- Building and monument signage available

For more information:

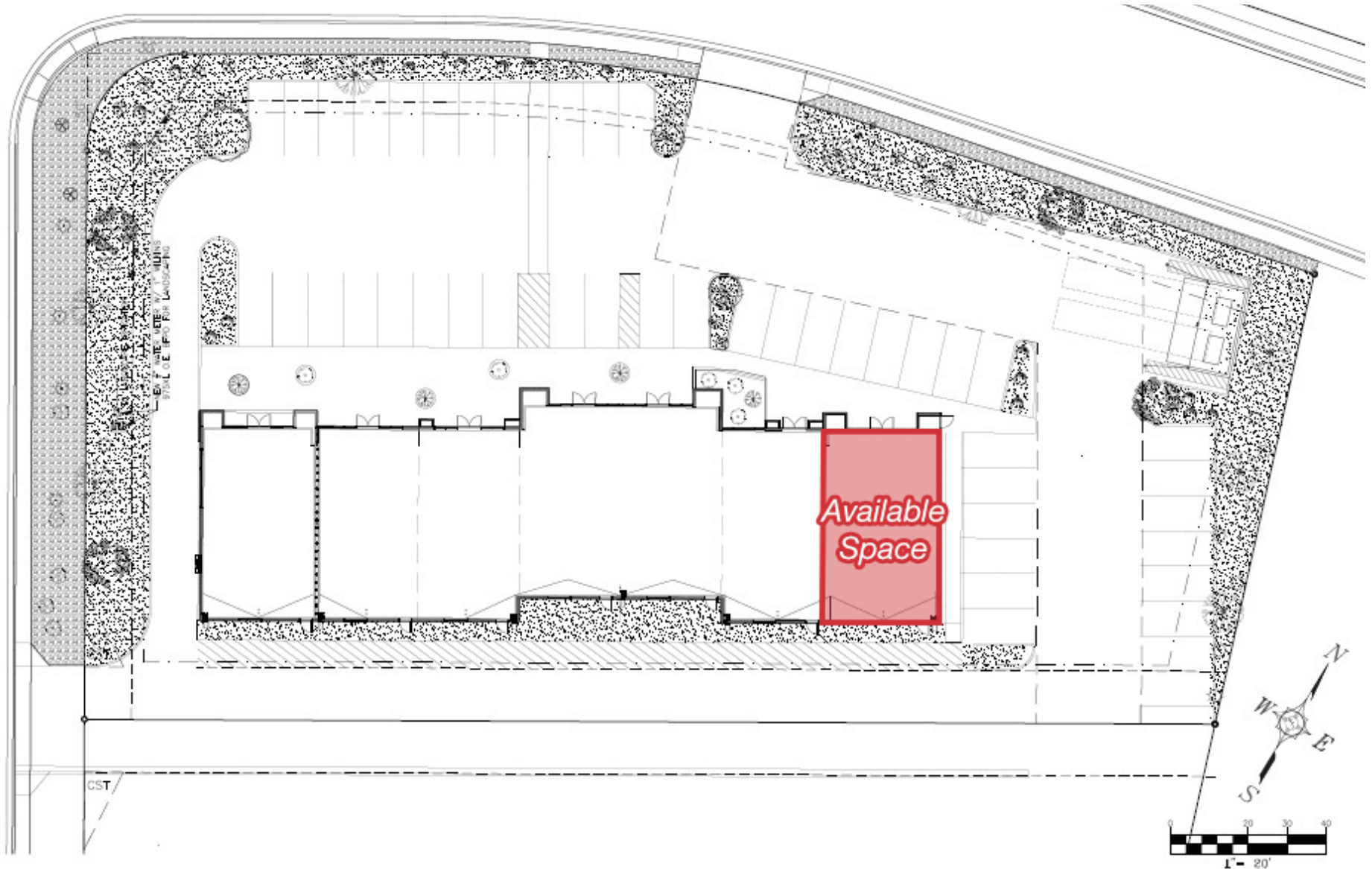
**Cheryl Reome**

575.644.9165 | [cheryl@1stvalley.com](mailto:cheryl@1stvalley.com)

We obtained the information above from sources we believe to be reliable. However, we have not verified its accuracy and make no guarantee, warranty or representation about it. It is submitted subject to the possibility of errors, omissions, change of price, rental or other conditions, prior sale, lease or financing, or withdrawal without notice. We include projections, opinions, assumptions or estimates for example only, and they may not represent current or future performance of the property. You and your tax and legal advisors should conduct your own investigation of the property and transaction.

1155 S Telshor Blvd  
Las Cruces, NM 88011  
575.521.1535  
[1stvalley.com](http://1stvalley.com)

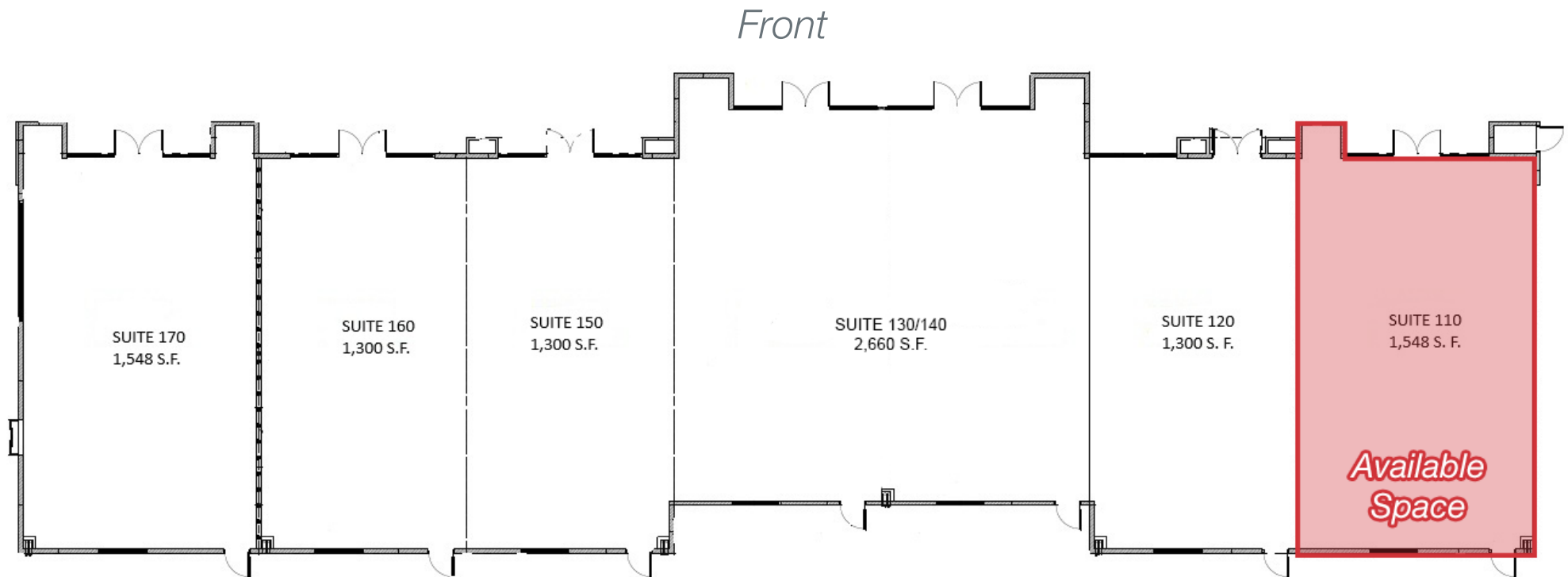
# Site Plan



We obtained the information above from sources we believe to be reliable. However, we have not verified its accuracy and make no guarantee, warranty or representation about it. It is submitted subject to the possibility of errors, omissions, change of price, rental or other conditions, prior sale, lease or financing, or withdrawal without notice. We include projections, opinions, assumptions or estimates for example only, and they may not represent current or future performance of the property. You and your tax and legal advisors should conduct your own investigation of the property and transaction.

1155 S Telshor Blvd  
Las Cruces, NM 88011  
575.521.1535  
[1stvalley.com](http://1stvalley.com)

# Floor Plan



We obtained the information above from sources we believe to be reliable. However, we have not verified its accuracy and make no guarantee, warranty or representation about it. It is submitted subject to the possibility of errors, omissions, change of price, rental or other conditions, prior sale, lease or financing, or withdrawal without notice. We include projections, opinions, assumptions or estimates for example only, and they may not represent current or future performance of the property. You and your tax and legal advisors should conduct your own investigation of the property and transaction.

1155 S Telshor Blvd  
Las Cruces, NM 88011  
575.521.1535  
[1stvalley.com](http://1stvalley.com)



# Map



## Nearby Traffic Counts:

Sonoma Ranch Blvd	12,566 VPD
HWY 70	20,721 VPD
Northrise Dr	7,357 VPD

Source: NMDOT, 2024

We obtained the information above from sources we believe to be reliable. However, we have not verified its accuracy and make no guarantee, warranty or representation about it. It is submitted subject to the possibility of errors, omissions, change of price, rental or other conditions, prior sale, lease or financing, or withdrawal without notice. We include projections, opinions, assumptions or estimates for example only, and they may not represent current or future performance of the property. You and your tax and legal advisors should conduct your own investigation of the property and transaction.

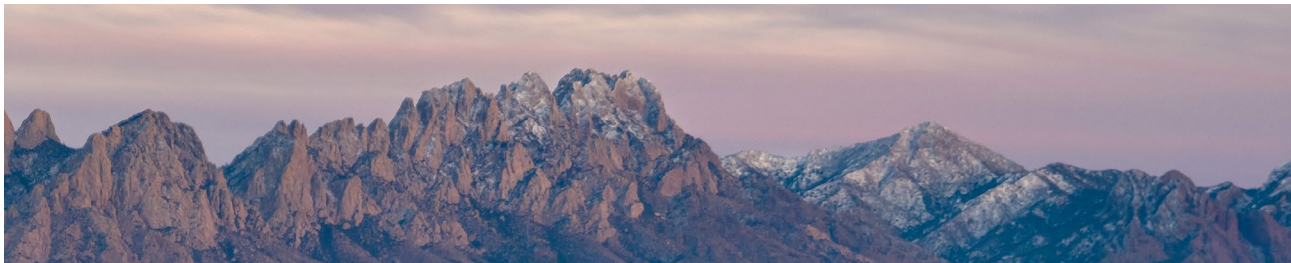
1155 S Telshor Blvd  
Las Cruces, NM 88011  
575.521.1535  
[1stvalley.com](http://1stvalley.com)



# Location Overview

## Las Cruces, New Mexico

Las Cruces is the largest city in southern New Mexico, and the second largest in the state. Located on the edge of the Chihuahuan Desert, the city sits at the foot of the Organ Mountains and along the banks of the Rio Grande River. Las Cruces enjoys over 350 days of sunshine a year, receiving an average of only 8.5 inches of rain per year and no more than two inches of snow in the winter.



The city has a population of 113,888 residents and is the county seat of Doña Ana County (app. 219,561 population). Las Cruces is 42 miles north of El Paso, TX, 225 miles south of Albuquerque, NM, and 275 miles east of Tucson, AZ.

### Awards & Recognition

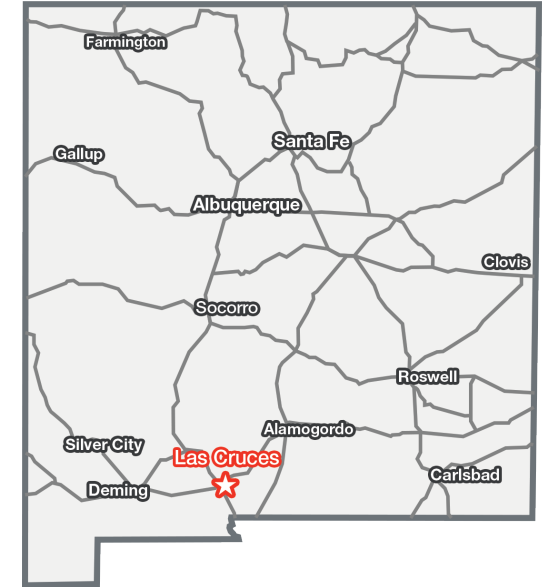
- Best Places To Retire in 2024, Forbes
- The 50 Best Places to Live in the U.S, Money.com (2024)
- Top 15 Best Cities in the Country to Raise a Family, Scholaroo.com (2023)
- New Mexico State University, Best Colleges for National Universities, U.S. News & World Report (2022)

Source: [www.visitlascruces.com](http://www.visitlascruces.com)

### Major Employers

- New Mexico State University
- Memorial Medical Ctr
- White Sands Missile Range
- Mountain View Regional Medical Ctr
- Dona Ana Branch Community Clg
- Keystone Consolidated Industries
- NASA

Source: [www.mveda.com](http://www.mveda.com)



### Doña Ana County

Population	219,561
Total Households	87,688
Average HH Income	\$56,451

Source: US Census Bureau, 2022

We obtained the information above from sources we believe to be reliable. However, we have not verified its accuracy and make no guarantee, warranty or representation about it. It is submitted subject to the possibility of errors, omissions, change of price, rental or other conditions, prior sale, lease or financing, or withdrawal without notice. We include projections, opinions, assumptions or estimates for example only, and they may not represent current or future performance of the property. You and your tax and legal advisors should conduct your own investigation of the property and transaction.

1155 S Telshor Blvd  
Las Cruces, NM 88011  
575.521.1535  
[1stvalley.com](http://1stvalley.com)