

# For Lease | Warehouse/Office



## 750 W Palms | Las Cruces, NM 88007

### Listing Overview

Lease Rate	\$14.00 - \$16.00 psf (MG)
Building Size	5,222 ± SF

- Commercial kitchen with hood, multiple walk-in coolers, loading dock, and office space
- Easy access to I-10 and HWY 70
- Located near the industrial district of Las Cruces

For more information:

**Jessie Carreon**

575.649.8157 | [jessie@1stvalley.com](mailto:jessie@1stvalley.com)

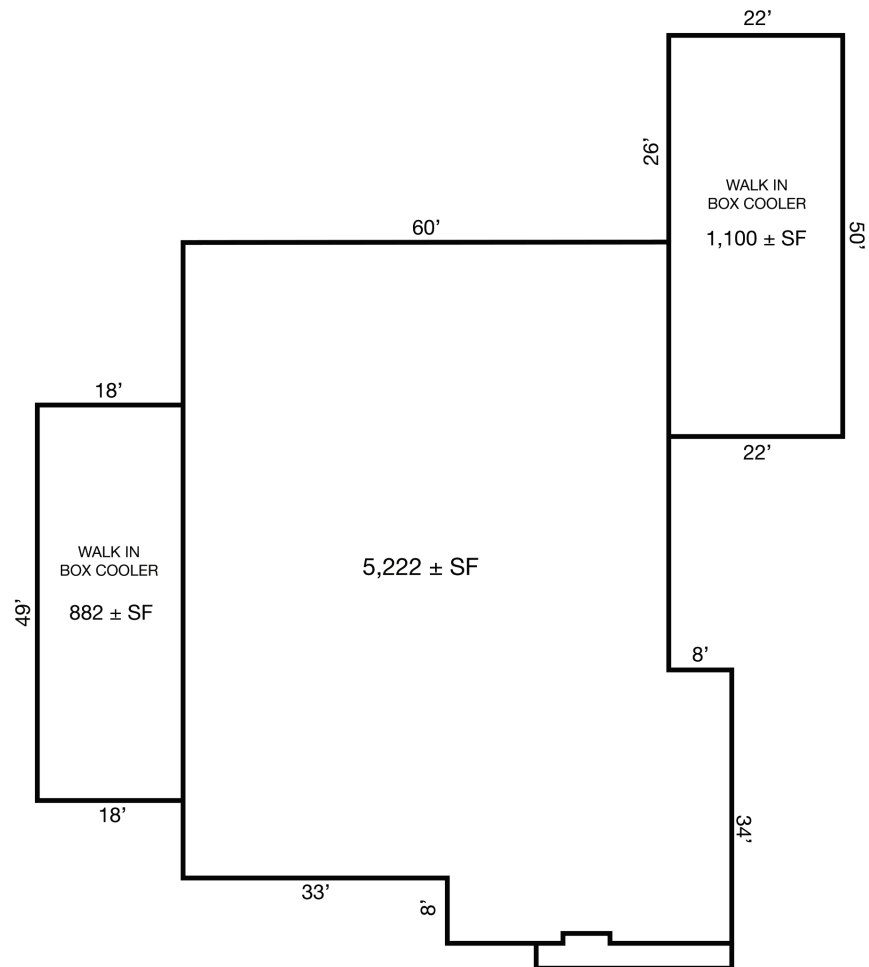
**Jay Hill**

575.644.5570 | [jay@1stvalley.com](mailto:jay@1stvalley.com)

We obtained the information above from sources we believe to be reliable. However, we have not verified its accuracy and make no guarantee, warranty or representation about it. It is submitted subject to the possibility of errors, omissions, change of price, rental or other conditions, prior sale, lease or financing, or withdrawal without notice. We include projections, opinions, assumptions or estimates for example only, and they may not represent current or future performance of the property. You and your tax and legal advisors should conduct your own investigation of the property and transaction.

1155 S Telshor Blvd  
Las Cruces, NM 88011  
575.521.1535  
[1stvalley.com](http://1stvalley.com)

# Floor Plan & Photos

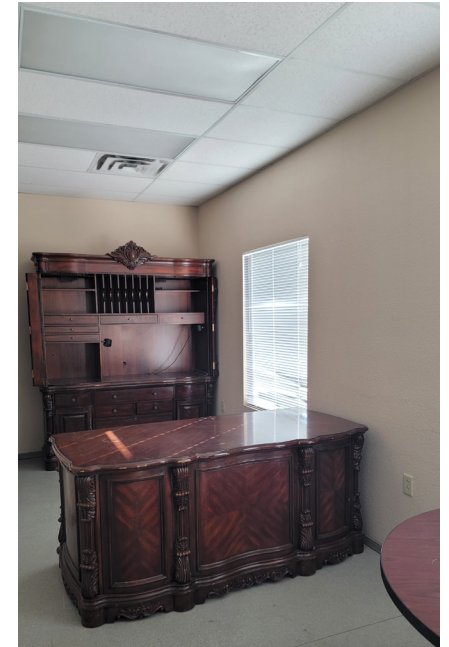


*Floor plan not to scale; for visual aid only.  
Information obtained from Doña Ana County Assessor*

We obtained the information above from sources we believe to be reliable. However, we have not verified its accuracy and make no guarantee, warranty or representation about it. It is submitted subject to the possibility of errors, omissions, change of price, rental or other conditions, prior sale, lease or financing, or withdrawal without notice. We include projections, opinions, assumptions or estimates for example only, and they may not represent current or future performance of the property. You and your tax and legal advisors should conduct your own investigation of the property and transaction.

1155 S Telshor Blvd  
Las Cruces, NM 88011  
575.521.1535  
[1stvalley.com](http://1stvalley.com)

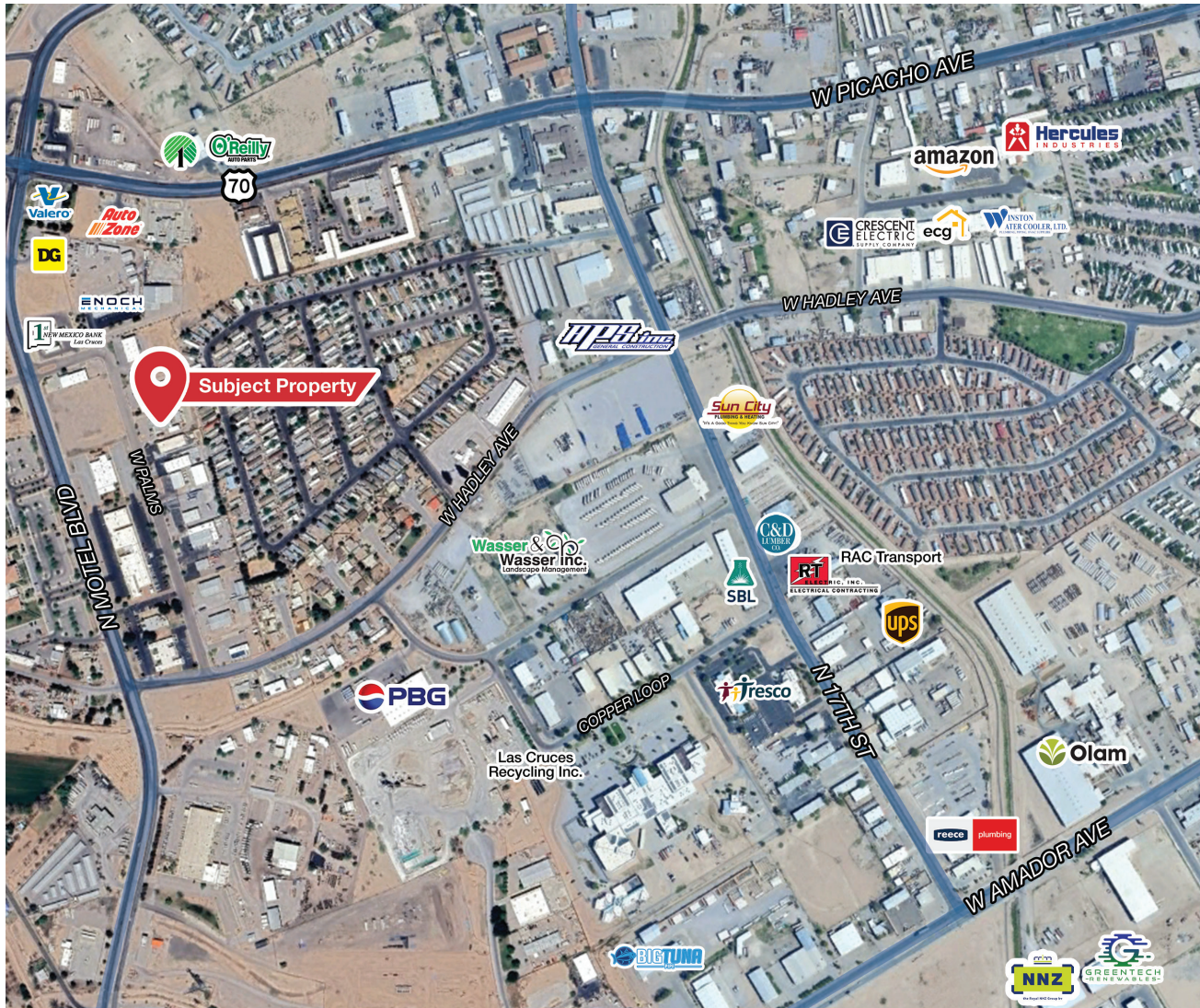
# Additional Photos



We obtained the information above from sources we believe to be reliable. However, we have not verified its accuracy and make no guarantee, warranty or representation about it. It is submitted subject to the possibility of errors, omissions, change of price, rental or other conditions, prior sale, lease or financing, or withdrawal without notice. We include projections, opinions, assumptions or estimates for example only, and they may not represent current or future performance of the property. You and your tax and legal advisors should conduct your own investigation of the property and transaction.

1155 S Telshor Blvd  
Las Cruces, NM 88011  
575.521.1535  
[1stvalley.com](http://1stvalley.com)

# Location Overview



## Nearby Traffic Counts:

N Motel Blvd	14,562 VPD
W Picacho Ave	12,027 VPD
W Hadley Ave	1,396 VPD

Source: NMDOT, 2023

## Las Cruces Demographics

Population	113,888
Total Households	45,297
Average HH Income	\$51,013

We obtained the information above from sources we believe to be reliable. However, we have not verified its accuracy and make no guarantee, warranty or representation about it. It is submitted subject to the possibility of errors, omissions, change of price, rental or other conditions, prior sale, lease or financing, or withdrawal without notice. We include projections, opinions, assumptions or estimates for example only, and they may not represent current or future performance of the property. You and your tax and legal advisors should conduct your own investigation of the property and transaction.

1155 S Telshor Blvd  
Las Cruces, NM 88011  
575.521.1535  
[1stvalley.com](http://1stvalley.com)