

# For Lease | Retail/Office Space

# NAI 1st Valley



*Subject Property*

562 North Telshor Blvd  
Las Cruces, NM 88011

## Offering Summary

Lease Rate	\$1,200/month (NNN)
Building Size	7,729 ± SF
Available Space	816 ± SF

- Ideal set up for 1 - 3 person office user
- End cap space in retail/office strip
- Other tenants include: Mann Mortgage and Manpower Staffing

For more information:

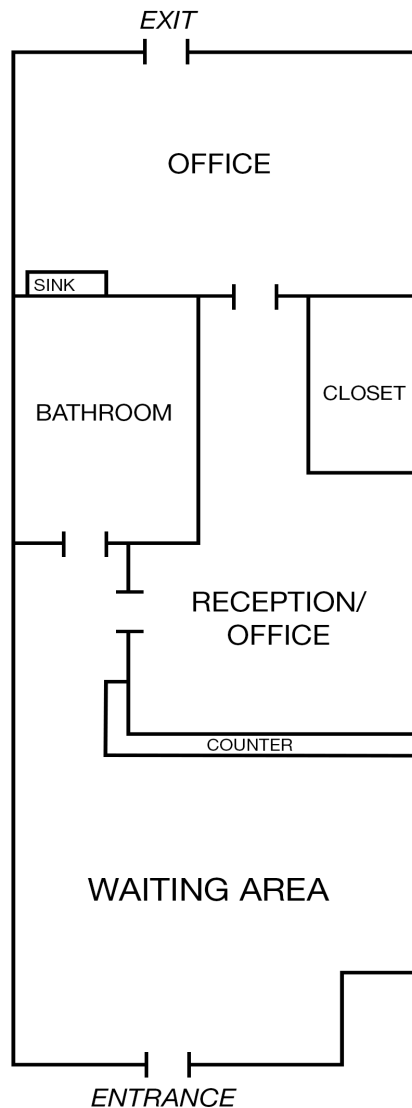
**Cheryl Reome**  
575.644.9165  
cheryl@1stvalley.com

**Jacob Slavec**  
575.644.8529  
jacob@1stvalley.com

We obtained the information above from sources we believe to be reliable. However, we have not verified its accuracy and make no guarantee, warranty or representation about it. It is submitted subject to the possibility of errors, omissions, change of price, rental or other conditions, prior sale, lease or financing, or withdrawal without notice. We include projections, opinions, assumptions or estimates for example only, and they may not represent current or future performance of the property. You and your tax and legal advisors should conduct your own investigation of the property and transaction.

1155 S Telshor Blvd  
Las Cruces, NM 88011  
575.521.1535  
[1stvalley.com](http://1stvalley.com)

# 562 N Telshor Blvd



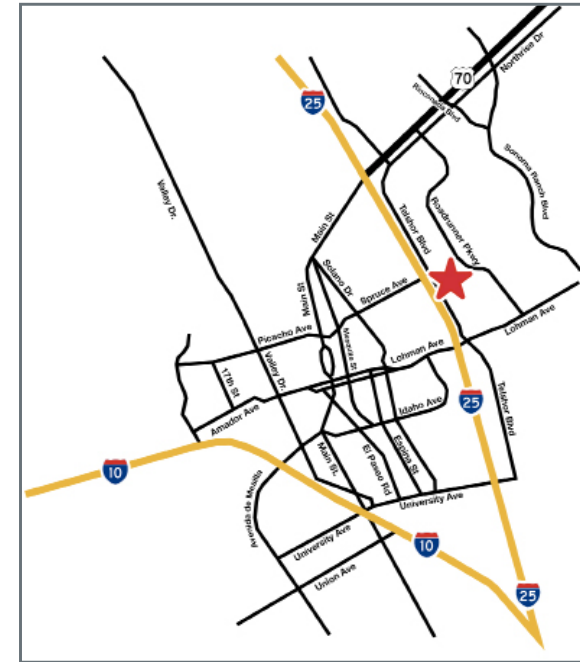
*\* Floor plan not to scale, for visual aid purposes only.*



We obtained the information above from sources we believe to be reliable. However, we have not verified its accuracy and make no guarantee, warranty or representation about it. It is submitted subject to the possibility of errors, omissions, change of price, rental or other conditions, prior sale, lease or financing, or withdrawal without notice. We include projections, opinions, assumptions or estimates for example only, and they may not represent current or future performance of the property. You and your tax and legal advisors should conduct your own investigation of the property and transaction.

1155 S Telshor Blvd  
Las Cruces, NM 88011  
575.521.1535  
[1stvalley.com](http://1stvalley.com)

# 562 N Telshor Blvd



## Las Cruces Demographics

Population	113,881
Total Households	47,379
Average HH Income	\$50,372

Source: US Census Bureau, 2022

## Nearby Traffic Counts:

N Telshor Blvd	24,297 VPD
I-25	30,942 VPD

Source: NMDOT, 2023

**NAI 1st Valley**  
Commercial Real Estate Services, Worldwide.

We obtained the information above from sources we believe to be reliable. However, we have not verified its accuracy and make no guarantee, warranty or representation about it. It is submitted subject to the possibility of errors, omissions, change of price, rental or other conditions, prior sale, lease or financing, or withdrawal without notice. We include projections, opinions, assumptions or estimates for example only, and they may not represent current or future performance of the property. You and your tax and legal advisors should conduct your own investigation of the property and transaction.

1155 S Telshor Blvd  
Las Cruces, NM 88011  
575.521.1535  
[1stvalley.com](http://1stvalley.com)