

# For Sale or Lease

Retail Space | 3,000 ± SF



## 3985 S Main St

Mesilla Park, NM 88047

### Offering Summary

---

**Sale Price** \$495,000

---

**Lease Rate** \$3,500/month (MG)

---

**Building Size** 3,000 ± SF

---

**Lot Size** 0.82 ± AC

---

For more information:

**Jessie Carreon**

O: 575.521.1535 C: 575.649.8157

jessie@1stvalley.com

### Property Highlights

- Zoning: C-1
- Stand alone building
- Fronts South Main Street
- Lot includes pecan trees and EBID rights
- Near new residential construction

### Las Cruces Demographics

---

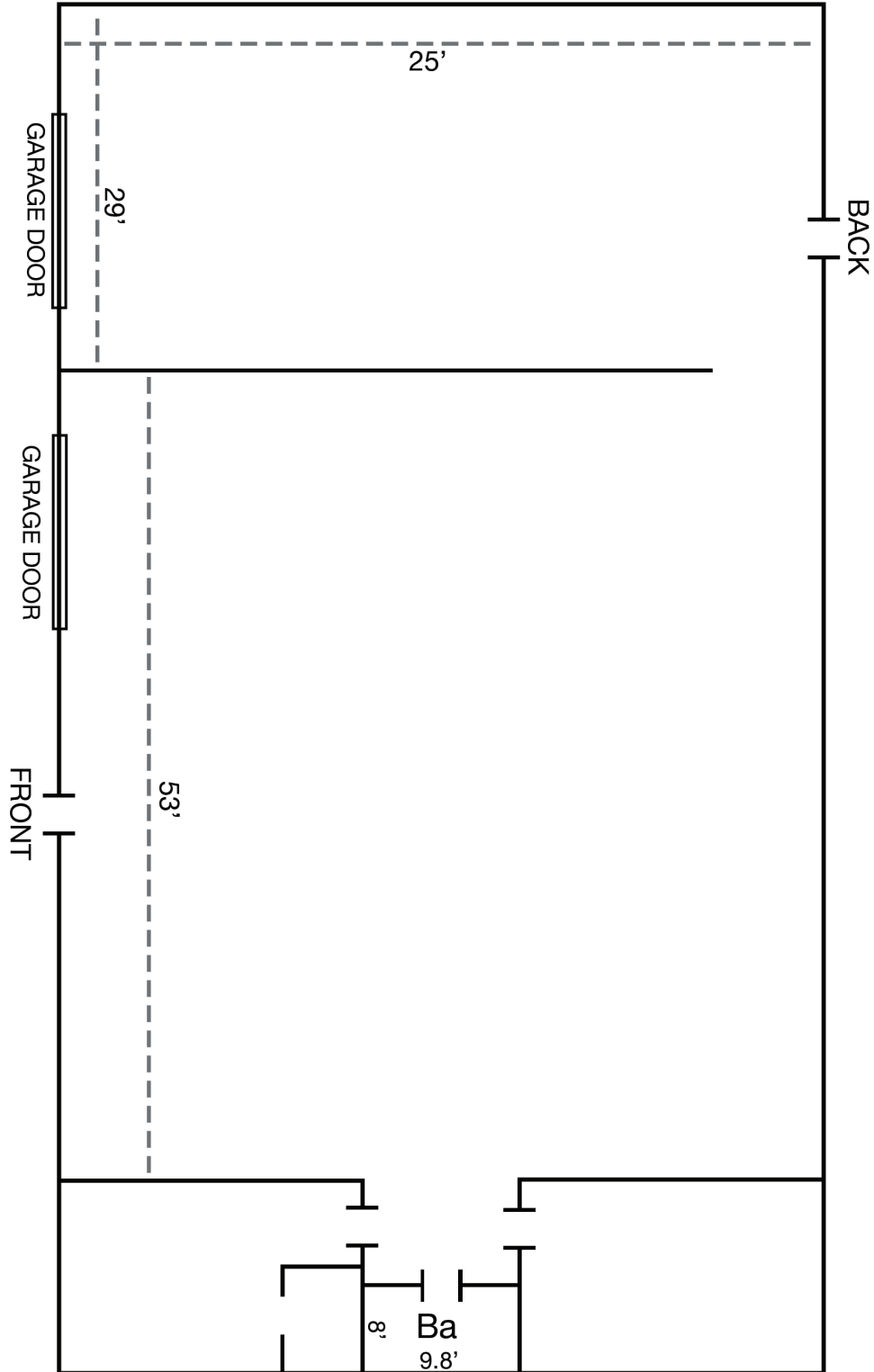
<b>Population</b>	113,888
<b>Total Households</b>	45,297
<b>Average HH Income</b>	\$51,013

---

## Interior Floor Plan

*Not to scale. For visual aid purposes only.*

South Main Street



# 3985 S Main St



We obtained the information above from sources we believe to be reliable. However, we have not verified its accuracy and make no guarantee, warranty or representation about it. It is submitted subject to the possibility of errors, omissions, change of price, rental or other conditions, prior sale, lease or financing, or withdrawal without notice. We include projections, opinions, assumptions or estimates for example only, and they may not represent current or future performance of the property. You and your tax and legal advisors should conduct your own investigation of the property and transaction.

1155 S Telshor Blvd  
Las Cruces, NM 88011  
(75) 521 - 1535  
[1stvalley.com](http://1stvalley.com)