



420 Roundtree Pl

Las Cruces, New Mexico 88005

Property Highlights

- Clear height - 18' - 22'
- Overhead door - 14' x 14'
- 400 amp 3 phase electric
- Covered fenced yard with concrete pad and lighting (approx. 1,350 square feet)
- Common loading dock
- Water, sewer and trash are included in rent
- Warehouse includes two story office area with reception area, office, breakroom, storage and bathroom downstairs, and a conference room and bathroom upstairs.
- Breakroom has double sink, stove, microwave and refrigerator

Offering Summary

Lease Rate:	\$2,800/month (MG)
Available SF:	2,600 +/- SF

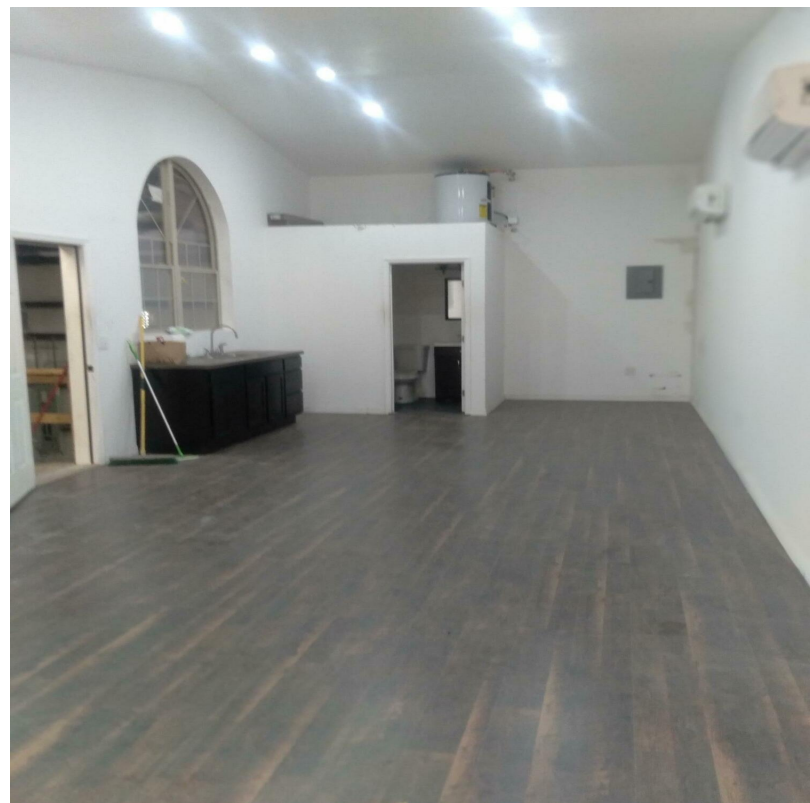
For More Information

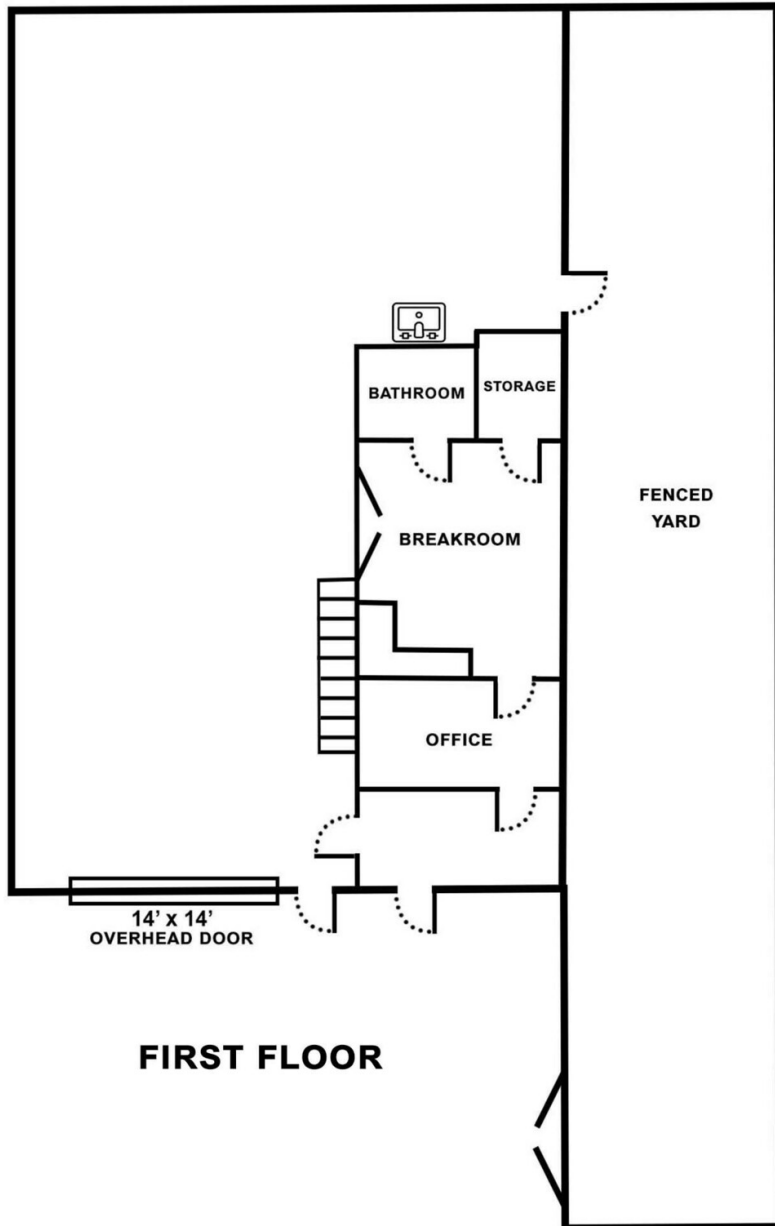
Cheryl Reome

O: 575 521 1535 C: 575 644 9165
cheryl@1stvalley.com

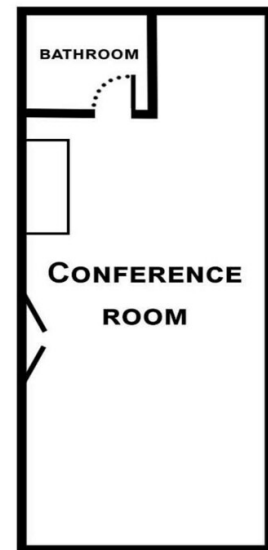
Stephanie Maddox

O: 575 521 1535 C: 575 639 3504
stephanie@1stvalley.com |





FIRST FLOOR



SECOND FLOOR

