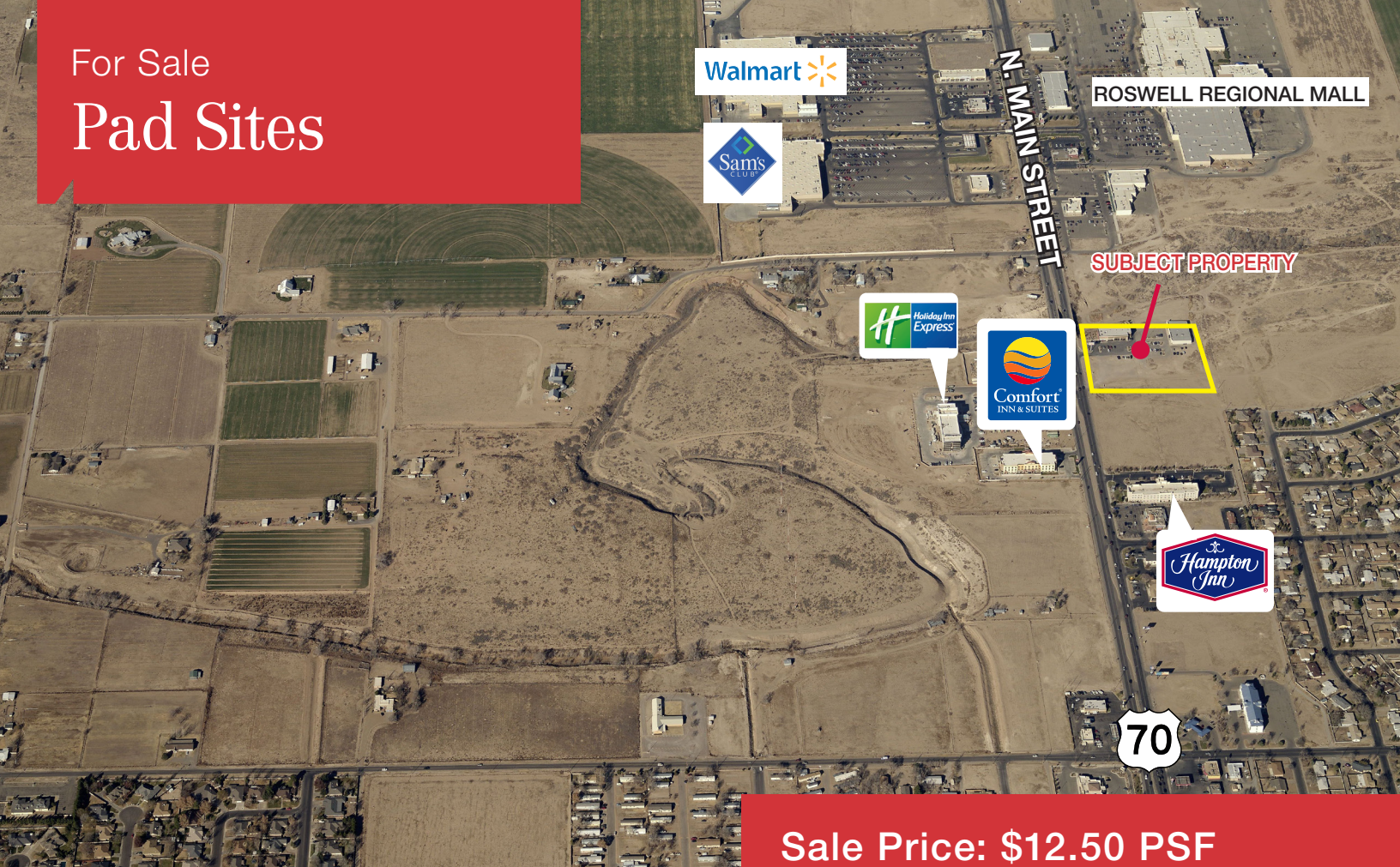


For Sale

Pad Sites



Sale Price: \$12.50 PSF

3701 North Main Street

Roswell, New Mexico 88201

Property Highlights

- PAD SITE SIZE: 48,177 SQ.FT. - 73,538 SQ.FT.
- ZONED: C-2
- Excellent frontage on Main Street
- Excellent visibility
- Close proximity to Wal-Mart, Sam's Club and Roswell Regional Mall
- Potentially a great location for a restaurant or retail



NA1st Valley

For more information:

Jake Redfearn

+ 575 635 5895
jake@1stvalley.com

Jacob Slavec

+ 575 644 8529
jacob@1stvalley.com

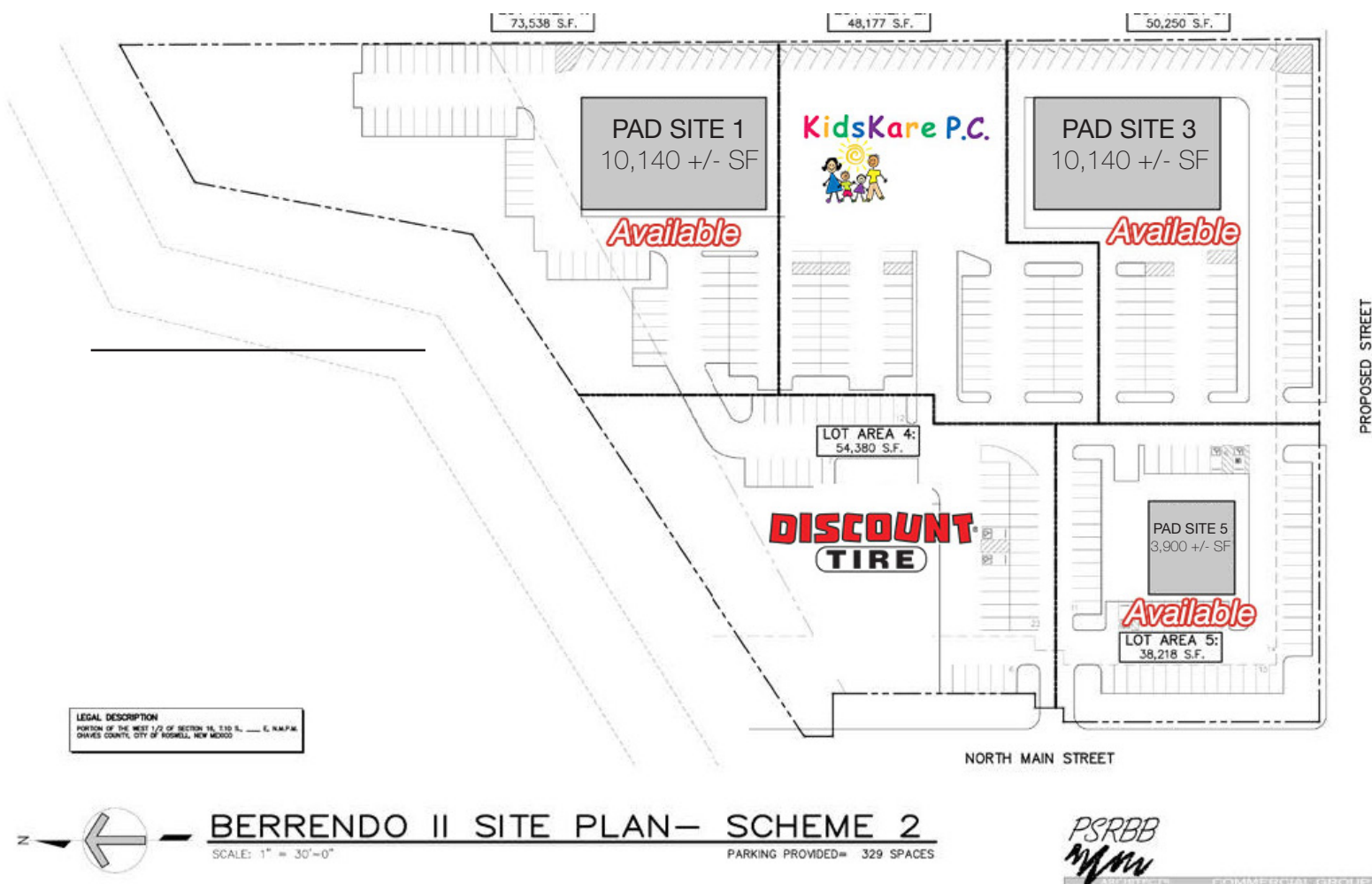
1155 South Telshor
Las Cruces, NM 88011
+1 575 521 1535

1stvalley.com

For Sale
Pad Sites

3701 North Main Street

Roswell, New Mexico 88201



Property Features

The significant frontage on Main Street gives this parcel excellent visibility and access to the major thoroughfare in the city of Roswell. The property is located in close proximity to the major retailers hub which includes WalMart, Sam’s Club and regional mall. This Pad Site has strong potential for retail, restaurant or hospitality clients.



NO WARRANTY OR REPRESENTATION, EXPRESS OR IMPLIED, IS MADE AS TO THE ACCURACY OF THE INFORMATION CONTAINED HEREIN, AND THE SAME IS SUBMITTED SUBJECT TO ERRORS, OMISSIONS, CHANGE OF PRICE, RENTAL OR OTHER CONDITIONS, PRIOR SALE, LEASE OR FINANCING, OR WITHDRAWAL WITHOUT NOTICE, AND OF ANY SPECIAL LISTING CONDITIONS IMPOSED BY OUR PRINCIPALS NO WARRANTIES OR REPRESENTATIONS ARE MADE AS TO THE CONDITION OF THE PROPERTY OR ANY HAZARDS CONTAINED THEREIN ARE ANY TO BE IMPLIED.

1155 South Telshor
 Las Cruces, NM 88011
 +1 575 521 1535
1stvalley.com