



**Lease Rate: \$18.00 SF/yr
NNN**

1165 Commerce Dr

Las Cruces, NM 88011

Property Features

- Single tenant building
- Easy accessibility via I-25 and Highway 70
- Close proximity to hospitals, post office, restaurants and shopping
- Landlord to provide new flooring and paint
- Building has a waiting room and reception area, 4 exam rooms, 1 office, 1 procedure room, a breakroom, 2 storage rooms and 2 restrooms

Turnkey medical office building located in the northeast quadrant of the city, which is the fastest growing and where there is limited availability of office space.



For more information:

Jacob Slavec, SIOR

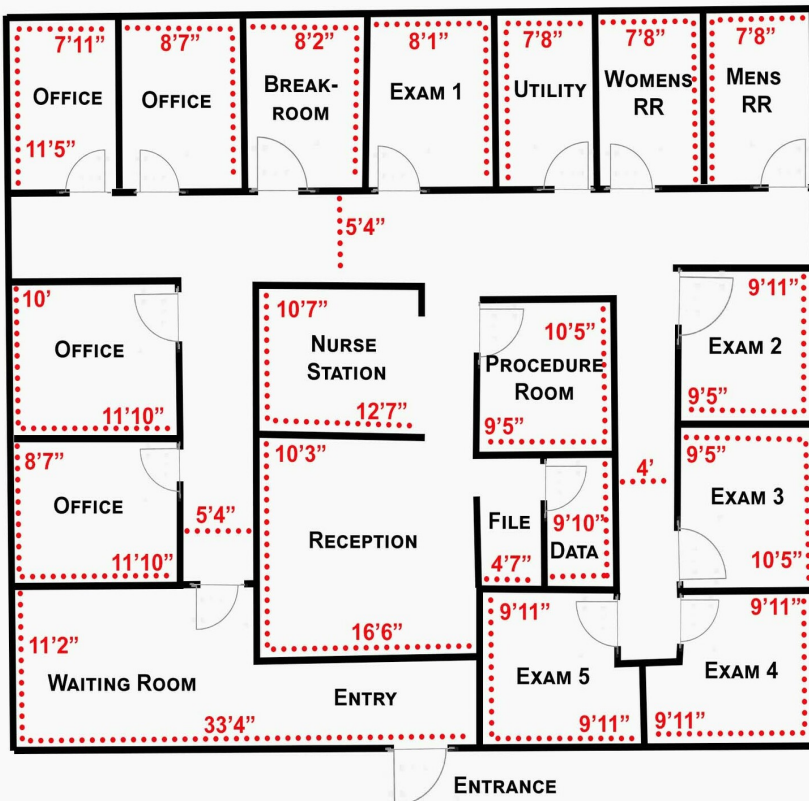
575 644 8529 • jacob@1stvalley.com

Cheryl Reome

575 644 9165 • cheryl@1stvalley.com

For Lease

Floor Plan *NOT TO SCALE. VISUAL AID PURPOSES ONLY*



For Lease

Aerial Map

